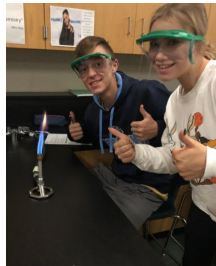




Crystal Lake South High School



Curriculum Night 2020

Welcome to the Class of 2024!



Welcome to the GATOR Family!



FOR EACH STUDENT - INSPIRE. EMPOWER. NURTURE.
Enter with promise. Leave with purpose.



The Purpose for Tonight



Enter with
promise.

FOUR YEAR ACADEMIC PLAN

Leave with
purpose.

FOR EACH STUDENT - INSPIRE. EMPOWER. NURTURE.
Enter with promise. Leave with purpose.



You have a whole GATOR community cheering you on!



Enter with Promise. Leave with Purpose.

Advice for the Class of 2024 from Generations of Gators

Class of 1982- Be yourself and embrace change. Get involved in a variety of activities and take elective classes as well as those that are challenging. Also know that your teachers truly care about you and that there is more than one teacher out there to build connections with.

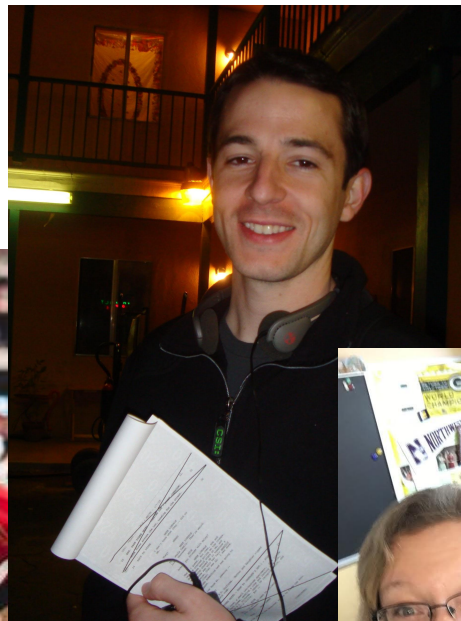
Class of 1998- Be kind to people, even if it's not the popular thing to do. You never know how much your kindness might mean to someone. No single test, or class, or college acceptance, is going to determine the rest of your life — but some of the good or bad habits you develop now can have a huge impact on it. Get enough sleep! Don't wait until the last minute to do that massive project. Allow yourself the time and space to do your best work. If you fail at something, be kind to yourself, but try again. Don't hide from the things that scare you. Face them, work through them, and ask for help.



FOR EACH STUDENT - INSPIRE. EMPOWER. NURTURE.
Enter with promise. Leave with purpose.



Your Journey Starts Now!



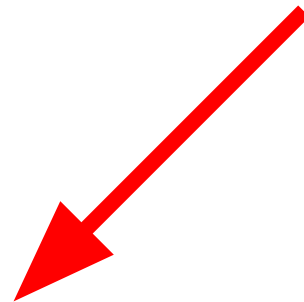
FOR EACH STUDENT - INSPIRE. EMPOWER. NURTURE.
Enter with promise. Leave with purpose.



Tonight's Overview: Empowering YOUR Purpose

<u>Time</u>	<u>Green</u>	<u>Yellow</u>
6:00- 6:20	Welcome and Overview- Theater	
6:30-6:40	Elective Session 1	Counselor Presentation
6:45-6:55	Elective Session 2	
7:00-7:10	Elective Session 3	
7:20-7:30	Counselor Presentation	Elective Session 1
7:35-7:45		Elective Session 2
7:50-8:00		Elective Session 3
8:05-8:15	Optional 4th Session or Building Tour. AVID Session (C32).	

Room Change-
The AVID session
will be in room
G18.



FOR EACH STUDENT - INSPIRE. EMPOWER. NURTURE.
Enter with promise. Leave with purpose.



Personalized Schedules For Each Student

Welcome to Curriculum Night at Crystal Lake South High School. We hope you find tonight's presentations beneficial in helping your child plan out her/his high school academic plan. Each family has a personalized itinerary for the evening based on the elective sessions you chose. Please plan to follow the itinerary below.

Session	Time	Elective Session / Location
Opening Presentation	6:00-6:20	Theater
Elective Session 1	6:30-6:40	
Elective Session 2	6:45-6:55	
Elective Session 3	7:00-7:10	
Counselor Presentation	7:15-7:55	
Optional Session	8:00-8:15	4 th Elective Session or Building Tour (See building map for locations)

After tonight, we have five steps we would like you to complete prior to 8th grade night.

1. Take a moment to fill out our short feedback form to let us know how the evening went for you and ask us any questions you might have: <http://bit.ly/CLSQuestions>.
2. Follow us on social media for answers to your questions and more. Please follow @CLS_SS on Twitter for informational updates, and like Crystal Lake South on Facebook (<https://www.facebook.com/CrystalLakeSouthHS>) where we will be answering your questions on future Facebook Live broadcasts airing each Friday at 3:30 p.m. You can also follow Crystal Lake South on Instagram (cls_gators) for photos of daily life in high school.
3. If you have not already, please make sure you fill out the activity/ interest form for 8th grade night (<http://bit.ly/CLS8thGradeNight>) by Friday. We use this information to create tour groups for 8th grade night.
4. Notify us if you need to change your 8th grade night time by calling 815-455-3860 x3226.
5. Create a draft four-year plan and course selection sheet. To help you with this process, we have provided several resources on our Crystal Lake South Student Services website (<http://bit.ly/gatorSS>). Scroll down to Course Selection Guide and Course Selection Resources. You will find tonight's counselor presentation, course wish lists for all four grade levels, our course selection guide, and more. If you have questions about course placement in English, math, or science, those questions will be addressed at 8th grade night.

Welcome to Curriculum Night at Crystal Lake South High School. We hope you find tonight's presentations beneficial in helping your child plan out her/his high school academic plan. Each family has a personalized itinerary for the evening based on the elective sessions you chose. Please plan to follow the itinerary below.

Session	Time	Elective Session / Location
Opening Presentation	6:00-6:20	Theater
Counselor Presentation	6:30-7:10	
Elective Session 1	7:15-7:25	
Elective Session 2	7:30-7:40	
Elective Session 3	7:45-7:55	
Optional Session	8:00-8:15	4 th Elective Session or Building Tour (See building map for locations)

After tonight, we have five steps we would like you to complete prior to 8th grade night.

1. Take a moment to fill out our short feedback form to let us know how the evening went for you and ask us any questions you might have: <http://bit.ly/CLSQuestions>.
2. Follow us on social media for answers to your questions and more. Please follow @CLS_SS on Twitter for informational updates, and like Crystal Lake South on Facebook (<https://www.facebook.com/CrystalLakeSouthHS>) where we will be answering your questions on future Facebook Live broadcasts airing each Friday at 3:30 p.m. You can also follow Crystal Lake South on Instagram (cls_gators) for photos of daily life in high school.
3. If you have not already, please make sure you fill out the activity/ interest form for 8th grade night (<http://bit.ly/CLS8thGradeNight>) by Friday. We use this information to create tour groups for 8th grade night.
4. Notify us if you need to change your 8th grade night time by calling 815-455-3860 x3226.
5. Create a draft four-year plan and course selection sheet. To help you with this process, we have provided several resources on our Crystal Lake South Student Services website (<http://bit.ly/gatorSS>). Scroll down to Course Selection Guide and Course Selection Resources. You will find tonight's counselor presentation, course wish lists for all four grade levels, our course selection guide, and more. If you have questions about course placement in English, math, or science, those questions will be addressed at 8th grade night.

*If you do not have all three sessions assigned, please fill in the rest of your schedule with the locations available on the building map.

FOR EACH STUDENT - INSPIRE. EMPOWER. NURTURE.
Enter with promise. Leave with purpose.



The Two Night Progression

Tonight: Curriculum

- Preparation for course selection at 8th grade night

8th Grade Night: Culture

- Q and A, tours, student guides, **final course selection**

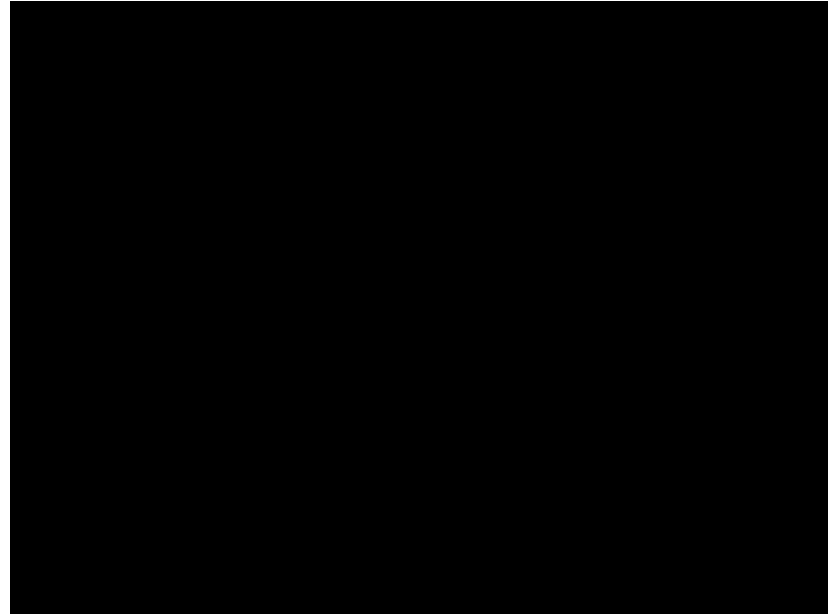


FOR EACH STUDENT - INSPIRE. EMPOWER. NURTURE.
Enter with promise. Leave with purpose.



8th Grade Night Instructions

- Come a little early, and enter through the main entrance doors
- Be in theater by assigned time
- Optional stations: photo booth and gator spirit wear



8th Grade Night Time Reminders

Thursday, January 16th, 5:00-6:30:

A, C, D, H, I, J, K, N, O, P, Q, S, Z

Thursday, January 16th, 6:45-8:15:


B, E, F, G, L, M, R, T, U, V, W, X, Y

Next Steps: A Checklist



1. Fill out the feedback form, ask our team questions, and provide questions you'd like answered by the parent panel at 8th grade night
2. Follow us on Twitter (@cls_ss, @clsouthhs, @joshuatnobilio, @clsratliff, @clsouthathletic), like us on Facebook, and/or follow us on Instagram
3. **Make sure you have filled out the activity/ athletic interest survey for 8th grade night by Friday afternoon**
4. Notify us if you need to change your 8th grade night time BY FRIDAY
5. Create a draft four-year plan and course selection sheet

Next Steps: Paperwork



Name: _____

HIGH SCHOOL FOUR-YEAR PLAN
Student Guide

DEVELOP YOUR Graduation Requirements:

<p>English 4 Credits</p> <p>English 1 – 4 Credits</p> <p>English 2 – 4 Credits</p> <p>English 3 – 4 Credits</p> <p>English 4 – 4 Credits</p>	<p>Physical Ed – 1.75 Credits</p> <p>Physical Ed 1 – 1.75 Credits</p> <p>Physical Ed 2 – 1.75 Credits</p> <p>Physical Ed 3 – 1.75 Credits</p> <p>Physical Ed 4 – 1.75 Credits</p>	<p>Drivers Ed – 25 Credits</p> <p>Drivers Ed 1 – 25 Credits</p> <p>Drivers Ed 2 – 25 Credits</p> <p>Drivers Ed 3 – 25 Credits</p> <p>Drivers Ed 4 – 25 Credits</p>	<p>Math – 4 Credits</p> <p>Math 1 – 4 Credits</p> <p>Math 2 – 4 Credits</p> <p>Math 3 – 4 Credits</p> <p>Math 4 – 4 Credits</p>
---	--	---	--

Mineral college requirements are listed below:

- English – 4 years
- Math – 3 years
- Science – 3 years
- Social Science – 3 years
- Fine or Applied Arts – 2 years (generally art, music, or one world language)

FRESHMAN YEAR

	I	II	III	IV
1. English	✓	✓	✓	✓
2. Math	✓	✓	✓	✓
3. Science	✓	✓	✓	✓
4. _____	✓	✓	✓	✓
5. _____	✓	✓	✓	✓
Physical Education	✓	✓	✓	✓
Freshman Foundations/Freshman Seminar	✓	✓	✓	✓
6th Major	_____	_____	_____	_____

JUNIOR YEAR

	I	II	III	IV
1. English	✓	✓	✓	✓
2. Math	✓	✓	✓	✓
3. _____	✓	✓	✓	✓
4. _____	✓	✓	✓	✓
5. _____	✓	✓	✓	✓
Physical Education	✓	✓	✓	✓
Junior Seminar	✓	✓	✓	✓
6th Major	_____	_____	_____	_____

SOPHOMORE YEAR

	I	II	III	IV
1. English	✓	✓	✓	✓
2. Math	✓	✓	✓	✓
3. Science	✓	✓	✓	✓
4. _____	✓	✓	✓	✓
5. _____	✓	✓	✓	✓
Physical Education/Health	✓	✓	✓	✓
Sophomore Seminar	✓	✓	✓	✓
6th Major	_____	_____	_____	_____

SENIOR YEAR

	I	II	III	IV
1. English	✓	✓	✓	✓
2. Math	✓	✓	✓	✓
3. _____	✓	✓	✓	✓
4. _____	✓	✓	✓	✓
5. _____	✓	✓	✓	✓
Physical Education	✓	✓	✓	✓
Senior Seminar	✓	✓	✓	✓
6th Major	_____	_____	_____	_____

SUMMER SCHOOL COURSES:

	I	II	III	IV
1. _____	_____	_____	_____	_____
2. _____	_____	_____	_____	_____
3. _____	_____	_____	_____	_____
4. _____	_____	_____	_____	_____



8th Grade Night – Course Selection Form

PART I. Here you will find your own recommendations and your required PE and Freshman Seminar classes. If you are interested in enrolling in Band or Choir, please place a check on the appropriate line. We are asking that you complete a "rough draft" of this document prior to attending 8th grade night. Please bring this "rough draft" document to 8th Grade Night as a reference.

English 101/102

Honors Geometry 371/372

Biology 300/310

Freshman PE

Please circle the appropriate uniform size (Small, Medium, Large, XL or XXL)

Freshman Seminar

_____ Band _____ Choir

Part II. Enter two elective courses per semester

Semester One

_____ Course Name _____

1. _____

2. _____

Semester Two

_____ Course Name _____

1. _____

2. _____

6th Major Requirements:

1. _____

2. _____

FRESHMAN COURSES

SL	SE
001	002
003	004
005	006
007	008
009	010
011	012
013	014
015	016
017	018
019	020
021	022
023	024
025	026
027	028
029	030
031	032
033	034
035	036
037	038
039	040
041	042
043	044
045	046
047	048
049	050
051	052
053	054
055	056
057	058
059	060
061	062
063	064
065	066
067	068
069	070
071	072
073	074
075	076
077	078
079	080
081	082
083	084
085	086
087	088
089	090
091	092
093	094
095	096
097	098
099	100

WORLD LANGUAGES

001 002 French I

003 004 Spanish I

005 006 German I

007 008 Italian I

009 010 Japanese I

011 012 Russian I

013 014 Latin I

015 016 Chinese I

017 018 Hindi I

019 020 Arabic I

021 022 Korean I

023 024 Vietnamese I

025 026 Thai I

027 028 Indonesian I

029 030 Filipino I

031 032 Bengali I

033 034 Urdu I

035 036 Persian I

037 038 Hebrew I

039 040 Yiddish I

041 042 Amharic I

043 044 Swahili I

045 046 Zulu I

047 048 Xhosa I

049 050 Ndebele I

051 052 Tswana I

053 054 Setswana I

055 056 Afrikaans I

057 058 Sotho I

059 060 Zulu I

061 062 Xhosa I

063 064 Ndebele I

065 066 Tswana I

067 068 Setswana I

069 070 Afrikaans I

071 072 Sotho I

073 074 Zulu I

075 076 Xhosa I

077 078 Ndebele I

079 080 Tswana I

081 082 Setswana I

083 084 Afrikaans I

085 086 Sotho I

087 088 Zulu I

089 090 Xhosa I

091 092 Ndebele I

093 094 Tswana I

095 096 Setswana I

097 098 Afrikaans I

099 100 Sotho I

101 102 Zulu I

103 104 Xhosa I

105 106 Ndebele I

107 108 Tswana I

109 110 Setswana I

111 112 Afrikaans I

113 114 Sotho I

115 116 Zulu I

117 118 Xhosa I

119 120 Ndebele I

121 122 Tswana I

123 124 Setswana I

125 126 Afrikaans I

127 128 Sotho I

129 130 Zulu I

131 132 Xhosa I

133 134 Ndebele I

135 136 Tswana I

137 138 Setswana I

139 140 Afrikaans I

141 142 Sotho I

143 144 Zulu I

145 146 Xhosa I

147 148 Ndebele I

149 150 Tswana I

151 152 Setswana I

153 154 Afrikaans I

155 156 Sotho I

157 158 Zulu I

159 160 Xhosa I

161 162 Ndebele I

163 164 Tswana I

165 166 Setswana I

167 168 Afrikaans I

169 170 Sotho I

171 172 Zulu I

173 174 Xhosa I

175 176 Ndebele I

177 178 Tswana I

179 180 Setswana I

181 182 Afrikaans I

183 184 Sotho I

185 186 Zulu I

187 188 Xhosa I

189 190 Ndebele I

191 192 Tswana I

193 194 Setswana I

195 196 Afrikaans I

197 198 Sotho I

199 200 Zulu I

201 202 Xhosa I

203 204 Ndebele I

205 206 Tswana I

207 208 Setswana I

209 210 Afrikaans I

211 212 Sotho I

213 214 Zulu I

215 216 Xhosa I

217 218 Ndebele I

219 220 Tswana I

221 222 Setswana I

223 224 Afrikaans I

225 226 Sotho I

227 228 Zulu I

229 230 Xhosa I

231 232 Ndebele I

233 234 Tswana I

235 236 Setswana I

237 238 Afrikaans I

239 240 Sotho I

241 242 Zulu I

243 244 Xhosa I

245 246 Ndebele I

247 248 Tswana I

249 250 Setswana I

251 252 Afrikaans I

253 254 Sotho I

255 256 Zulu I

257 258 Xhosa I

259 260 Ndebele I

261 262 Tswana I

263 264 Setswana I

265 266 Afrikaans I

267 268 Sotho I

269 270 Zulu I

271 272 Xhosa I

273 274 Ndebele I

275 276 Tswana I

277 278 Setswana I

279 280 Afrikaans I

281 282 Sotho I

283 284 Zulu I

285 286 Xhosa I

287 288 Ndebele I

289 290 Tswana I

291 292 Setswana I

293 294 Afrikaans I

295 296 Sotho I

297 298 Zulu I

299 300 Xhosa I

301 302 Ndebele I

303 304 Tswana I

305 306 Setswana I

307 308 Afrikaans I

309 310 Sotho I

311 312 Zulu I

313 314 Xhosa I

315 316 Ndebele I

317 318 Tswana I

319 320 Setswana I

321 322 Afrikaans I

323 324 Sotho I

325 326 Zulu I

327 328 Xhosa I

329 330 Ndebele I

331 332 Tswana I

333 334 Setswana I

335 336 Afrikaans I

337 338 Sotho I

339 340 Zulu I

341 342 Xhosa I

343 344 Ndebele I

345 346 Tswana I

347 348 Setswana I

349 350 Afrikaans I

351 352 Sotho I

353 354 Zulu I

355 356 Xhosa I

357 358 Ndebele I

359 360 Tswana I

361 362 Setswana I

363 364 Afrikaans I

365 366 Sotho I

367 368 Zulu I

369 370 Xhosa I

371 372 Ndebele I

373 374 Tswana I

375 376 Setswana I

377 378 Afrikaans I

379 380 Sotho I

381 382 Zulu I

383 384 Xhosa I

385 386 Ndebele I

387 388 Tswana I

389 390 Setswana I

391 392 Afrikaans I

393 394 Sotho I

395 396 Zulu I

397 398 Xhosa I

399 400 Ndebele I

401 402 Tswana I

403 404 Setswana I

405 406 Afrikaans I

407 408 Sotho I

409 410 Zulu I

411 412 Xhosa I

413 414 Ndebele I

415 416 Tswana I

417 418 Setswana I

419 420 Afrikaans I

421 422 Sotho I

423 424 Zulu I

425 426 Xhosa I

427 428 Ndebele I

429 430 Tswana I

431 432 Setswana I

433 434 Afrikaans I

435 436 Sotho I

437 438 Zulu I

439 440 Xhosa I

441 442 Ndebele I

443 444 Tswana I

445 446 Setswana I

447 448 Afrikaans I

449 450 Sotho I

451 452 Zulu I

453 454 Xhosa I

455 456 Ndebele I

457 458 Tswana I

459 460 Setswana I

461 462 Afrikaans I

463 464 Sotho I

465 466 Zulu I

467 468 Xhosa I

469 470 Ndebele I

471 472 Tswana I

473 474 Setswana I

475 476 Afrikaans I

477 478 Sotho I

479 480 Zulu I

481 482 Xhosa I

483 484 Ndebele I

485 486 Tswana I

487 488 Setswana I

489 490 Afrikaans I

491 492 Sotho I

493 494 Zulu I

495 496 Xhosa I

497 498 Ndebele I

499 500 Tswana I

501 502 Setswana I

503 504 Afrikaans I

505 506 Sotho I

507 508 Zulu I

509 510 Xhosa I

511 512 Ndebele I

513 514 Tswana I

515 516 Setswana I

517 518 Afrikaans I

519 520 Sotho I

521 522 Zulu I

523 524 Xhosa I

525 526 Ndebele I

527 528 Tswana I

529 530 Setswana I

531 532 Afrikaans I

533 534 Sotho I

535 536 Zulu I

537 538 Xhosa I

539 540 Ndebele I

541 542 Tswana I

543 544 Setswana I

545 546 Afrikaans I

547 548 Sotho I

549 550 Zulu I

551 552 Xhosa I

553 554 Ndebele I

555 556 Tswana I

557 558 Setswana I

559 560 Afrikaans I

561 562 Sotho I

563 564 Zulu I

565 566 Xhosa I

567 568 Ndebele I

569 570 Tswana I

571 572 Setswana I

573 574 Afrikaans I

575 576 Sotho I

577 578 Zulu I

579 580 Xhosa I

581 582 Ndebele I

583 584 Tswana I

585 586 Setswana I

587 588 Afrikaans I

589 590 Sotho I

591 592 Zulu I

593 594 Xhosa I

595 596 Ndebele I

597 598 Tswana I

599 600 Setswana I

601 602 Afrikaans I

603 604 Sotho I

605 606 Zulu I

607 608 Xhosa I

609 610 Ndebele I

611 612 Tswana I

613 614 Setswana I

615 616 Afrikaans I

617 618 Sotho I

619 620 Zulu I

621 622 Xhosa I

623 624 Ndebele I

625 626 Tswana I

627 628 Setswana I

629 630 Afrikaans I

631 632 Sotho I

633 634 Zulu I

635 636 Xhosa I

637 638 Ndebele I

639 640 Tswana I

641 642 Setswana I

643 644 Afrikaans I

645 646 Sotho I

647 648 Zulu I

649 650 Xhosa I

651 652 Ndebele I

653 654 Tswana I

655 656 Setswana I

657 658 Afrikaans I

659 660 Sotho I

661 662 Zulu I

663 664 Xhosa I

665 666 Ndebele I

667 668 Tswana I

669 670 Setswana I

671 672 Afrikaans I

673 674 Sotho I

675 676 Zulu I

677 678 Xhosa I

679 680 Ndebele I

681 682 Tswana I

683 684 Setswana I

685 686 Afrikaans I

687 688 Sotho I

689 690 Zulu I

691 692 Xhosa I

693 694 Ndebele I

695 696 Tswana I

697 698 Setswana I

699 700 Afrikaans I

701 702 Sotho I

703 704 Zulu I

705 706 Xhosa I

707 708 Ndebele I

709 710 Tswana I

711 712 Setswana I

713 714 Afrikaans I

715 716 Sotho I

717 718 Zulu I

719 720 Xhosa I

721 722 Ndebele I

723 724 Tswana I

725 726 Setswana I

727 728 Afrikaans I

729 730 Sotho I

731 732 Zulu I

733 734 Xhosa I

735 736 Ndebele I

737 738 Tswana I

739 740 Setswana I

741 742 Afrikaans I

743 744 Sotho I

745 746 Zulu I

747 748 Xhosa I

749 750 Ndebele I

751 752 Tswana I

753 754 Setswana I

755 756 Afrikaans I

757 758 Sotho I

759 760 Zulu I

761 762 Xhosa I

763 764 Ndebele I

765 766 Tswana I

767 768 Setswana I

769 770 Afrikaans I

771 772 Sotho I

773 774 Zulu I

775 776 Xhosa I

777 778 Ndebele I

779 780 Tswana I

781 782 Setswana I

783 784 Afrikaans I

785 786 Sotho I

787 788 Zulu I

789 790 Xhosa I

791 792 Ndebele I

793 794 Tswana I

795 796 Setswana I

797 798 Afrikaans I

799 800 Sotho I

801 802 Zulu I

803 804 Xhosa I

805 806 Ndebele I

807 808 Tswana I

809 810 Setswana I

811 812 Afrikaans I

813 814 Sotho I

815 816 Zulu I

817 818 Xhosa I

819 820 Ndebele I

821 822 Tswana I

823 824 Setswana I

825 826 Afrikaans I

827 828 Sotho I

829 830 Zulu I

831 832 Xhosa I

833 834 Ndebele I

835 836 Tswana I

837 838 Setswana I

839 840 Afrikaans I

841 842 Sotho I

843 844 Zulu I

845 846 Xhosa I

847 848 Ndebele I

849 850 Tswana I

851 852 Setswana I

853 854 Afrikaans I

855 856 Sotho I

857 858 Zulu I

859 860 Xhosa I

861 862 Ndebele I

863 864 Tswana I

865 866 Setswana I

867 868 Afrikaans I

869 870 Sotho I

871 872 Zulu I

873 874 Xhosa I

875 876 Ndebele I

877 878 Tswana I

879 880 Setswana I

881 882 Afrikaans I

883 884 Sotho I

885 886 Zulu I

887 888 Xhosa I

889 890 Ndebele I

891 892 Tswana I

893 894 Setswana I

895 896 Afrikaans I

897 898 Sotho I

899 900 Zulu I

901 902 Xhosa I

903 904 Ndebele I

905 906 Tswana I

907 908 Setswana I

909 910 Afrikaans I

911 912 Sotho I

913 914 Zulu I

915 916 Xhosa I

917 918 Ndebele I

919 920 Tswana I

921 922 Setswana I

923 924 Afrikaans I

925 926 Sotho I

927 928 Zulu I

929 930 Xhosa I

931 932 Ndebele I

933 934 Tswana I

935 936 Setswana I

937 938 Afrikaans I

939 940 Sotho I

941 942 Zulu I

943 944 Xhosa I

945 946 Ndebele I

947 948 Tswana I

949 950 Setswana I

951 952 Afrikaans I

953 954 Sotho I

955 956 Zulu I

957 958 Xhosa I

959 960 Ndebele I

961 962 Tswana I

963 964 Setswana I

965 966 Afrikaans I

967 968 Sotho I

969 970 Zulu I

971 972 Xhosa I

973 974 Ndebele I

975 976 Tswana I

977 978 Setswana I

979 980 Afrikaans I

981 982 Sotho I

983 984 Zulu I

985 986 Xhosa I

987 988 Ndebele I

Feedback, Questions, and Answers

<http://bit.ly/CLSQuestions2020>

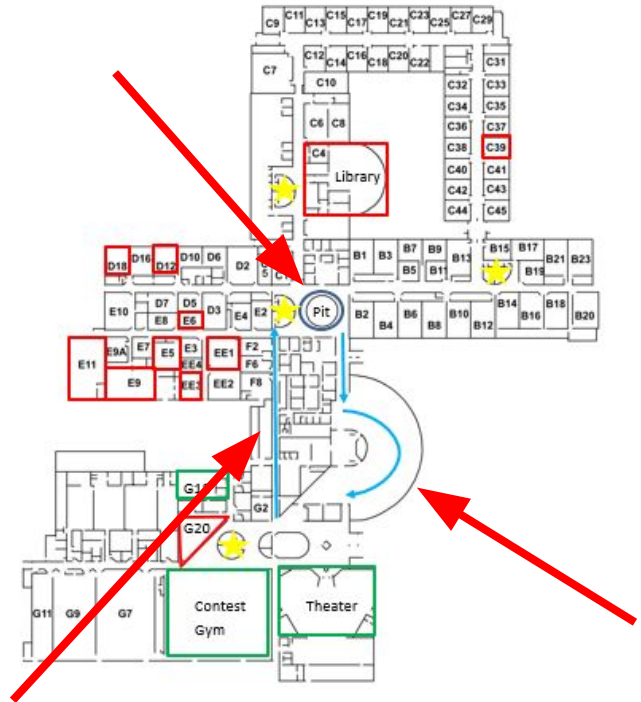


FOR EACH STUDENT - INSPIRE. EMPOWER. NURTURE.
Enter with promise. Leave with purpose.



Tips and Requests for the Evening

1. When you are headed TO the pit area, use F hall.
2. When you are headed TO the theater/ gym area, use the cafeteria.
3. If you'd like a building tour from a current student at the end of the evening, meet in the pit.
4. Where do I go if two rooms are listed for a session?



Exiting the Theater

- Green Forms headed to B or D Hallway or the Library
- Green Forms headed to E or EE Hallway
- Green Forms headed to G20
- Yellow Forms to G18 with Kyle McCaughn
- Yellow Forms to Contest Gym with Brett Collins and Kerri Bowers
- All Yellow Forms with Mike Collins and Tammy Freund will remain in the theater